

MAD DINING CHAIR

MARCEL WANDERS (2015)



DESCRIPTION

Simple but elegant, sophisticated but versatile: the Mad Dining Chair brings all the special features of the Marcel Wanders' collection to a chair, from the continuous trend of the body to the profile of the seat and chair back, together with the placement of the legs that widen towards the floor.

Poliform

MAD DINING CHAIR

MARCEL WANDERS (2015)



TECHNICAL DESCRIPTION

TYPOLOGY

chair with or without armrests

Structure

solid wood

Seat/Backrest

flexible moulded polyurethane

Features

final cover in fabric/leather non removable

Poliform

MAD DINING CHAIR

MARCEL WANDERS (2015)

S40



480
19"

790
31"



575
22 3/4"

480
19"



S15



490
19 1/4"

790
31"



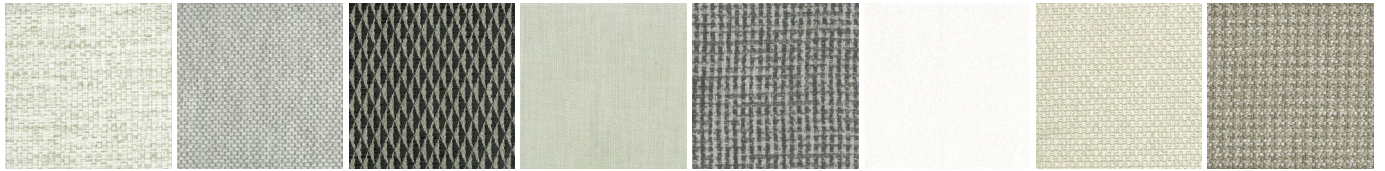
575
22 3/4"

480
19"



MAD DINING CHAIR

FINISHINGS\SEAT\FABRIC (35)



CHIOS

ARGO

CORINTO

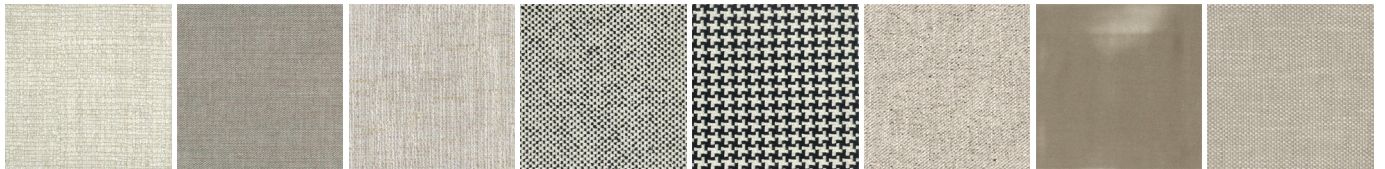
ITACA

MILOS

OLIMPIA

PAROS

ZANTE



SPARTA

SALFORD

ORLEANS

DERBY

LIMOGES

OXFORD

PERSIA

RABAT



MERIDA

HANNOVER

CORDOBA

CALEDONIA

NORWAY

ASPEN

ATLANTA

BERLINO



KYOTO

LIMA

MELBOURNE

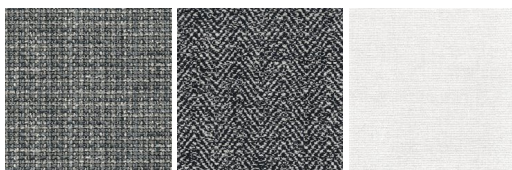
PORTO

REIMS

SAVANA

SIVIGLIA

INDRA - NEW



LIPSI - NEW

SKYROS -
NEW

NAXOS - NEW

MAD DINING CHAIR

FINISHINGS\SEAT \LEATHER (8)



NABUK
LEATHER

VINTAGE
LEATHER

SUPER
LEATHER

PELLE
SPECIAL

AGED-
LOOKING
LEATHER

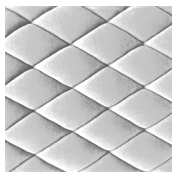
COLORS
LEATHER

SPRING
LEATHER

SOFT
LEATHER

MAD DINING CHAIR

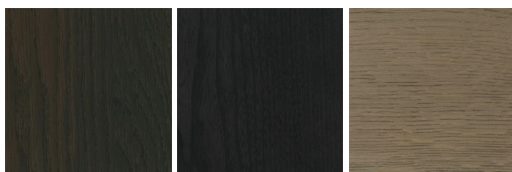
FINISHINGS\SEAT \GIBSON (1)



GIBSON

MAD DINING CHAIR

FINISHINGS\STRUCTURE\WOODS (3)



SPESSART
OAK

BLACK ELM

CENERE OAK