

WESTSIDE

JEAN-MARIE MASSAUD (2020)



DESCRIPTION

Westside is the polymorphic system that reinvents the living area experience: a group of essential modules which, thanks to a deft play of combinations, presents itself as a small private island with classic angular configuration or wide deconstructed, welcoming modular sofa. Expression of absolute comfort, it suits any context: from residential to public areas and hospitality. A refined balance of materials, shapes and different heights characterizes the Westside coffee tables collection.

Poliform

WESTSIDE

JEAN-MARIE MASSAUD (2020)



TECHNICAL DESCRIPTION

Typology

Coffee table

Top

Medium-density fibre panel veneered - marble

Structure and base

Medium-density fibre panel veneered

WESTSIDE

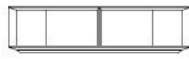
JEAN-MARIE MASSAUD (2020)

TWE120G

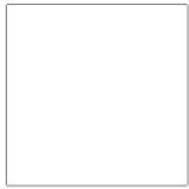


1200
47 1/4"

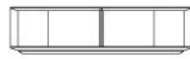
310
12 1/4"



1200
47 1/4"



TWE120



1200
47 1/4"

310
12 1/4"



600
23 1/2"



CA001



574
22 1/2"

233
9 1/4"



574
22 1/2"



TWE050



500
19 3/4"

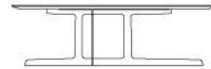
475
18 3/4"



500
19 3/4"

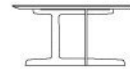


TWE130



1300
51 1/4"

390
15 1/4"



800
31 1/2"



WESTSIDE

FINISHINGS\STRUCTURE\WOODS (1)



BLACK ELM

WESTSIDE

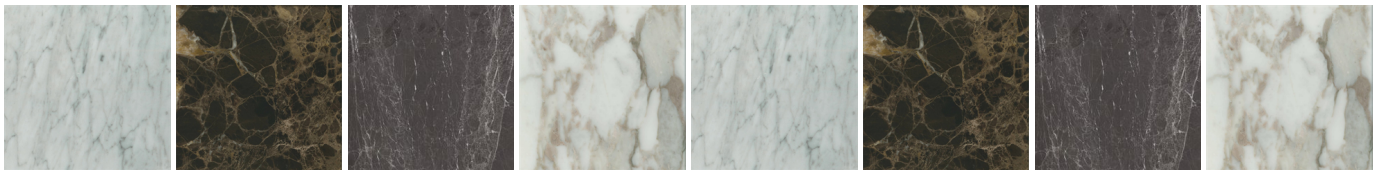
FINISHINGS\TOP\WOODS (1)



BLACK ELM

WESTSIDE

FINISHINGS\TOP\MARBLES POLIFORM AND ZECEVO (11)



MATT
BIANCO
CARRARA

MATT
EMPERADOR

MATT GREY
STARDUST

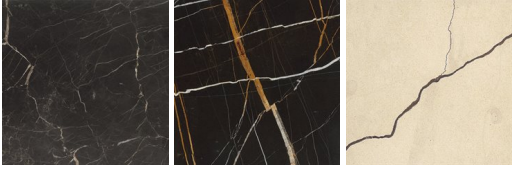
MATT
CALACATTA
ORO

GLOSSY
BIANCO
CARRARA

GLOSSY
EMPERADOR

GLOSSY
GREY
STARDUST

GLOSSY
CALACATTA
ORO



GLOSSY
NOIR SAINT
LAURENT

MATT
SAHARA
NOIR

ZECEVO
LEVIGATO

WESTSIDE

FINISHINGS\BASEWOODS (1)



BLACK ELM