

JANE

EMMANUEL GALLINA (2017)



DESCRIPTION

The inspiration springs from the desire to conceive a collection with small sizes that would build a sense of comfort and intimacy. The design plays with subtle lines, where gentle inclinations and curves bestow the object with a dynamic personality. The finishes – metal or wood for the structure – give it both a classic and contemporary identity. With its cosy, enveloping lines the Jane collection interprets spaces where elegance is at the service of relaxation.

Poliform

JANE

EMMANUEL GALLINA (2017)



TECHNICAL DESCRIPTION

TYPOLOGIE

seat system

Structure

in flexible moulded polyurethane

Base

solid wood or metal with feet in painted aluminium

Seat padding

flexible multi-density polyurethane

Pre-cover

polyester padding

Cover finale stretched

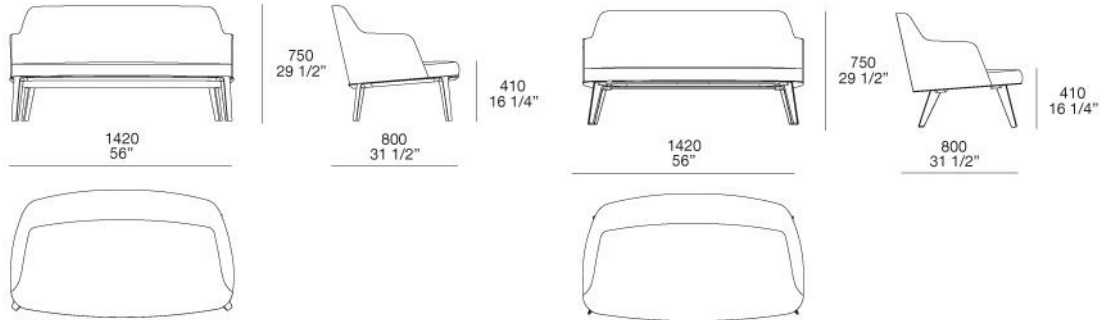
removable cover in fabric and not removable in leather

Poliform

JANE

EMMANUEL GALLINA (2017)

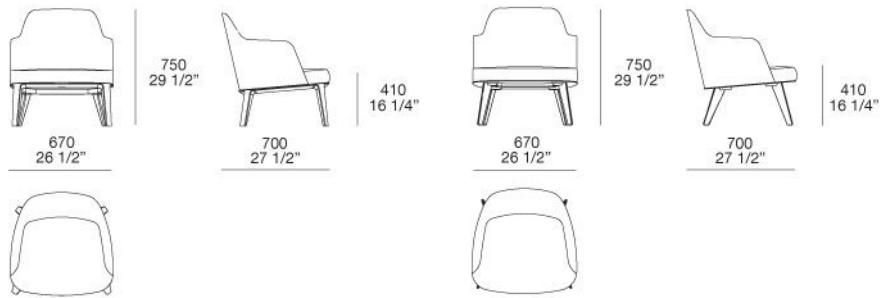
JNDI142



Basamento Legno / Wooden Base

Basamento Metallo / Metal Base

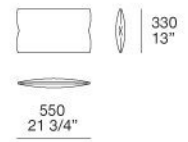
JNPL067



Basamento Legno / Wooden Base

Basamento Metallo / Metal Base

JNPR001



JNPN130

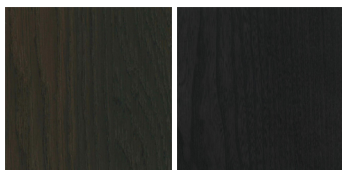


JNPP130



JANE

FINISHINGS\BASE\WOODS (2)

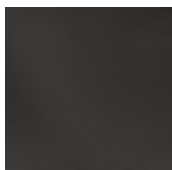


SPESSART
OAK

BLACK ELM

JANE

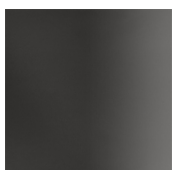
FINISHINGS\ALUMINUM FEET\ BROWN NICKEL MAT PAINTED (1)



BROWN
NICKEL MAT
PAINTED

JANE

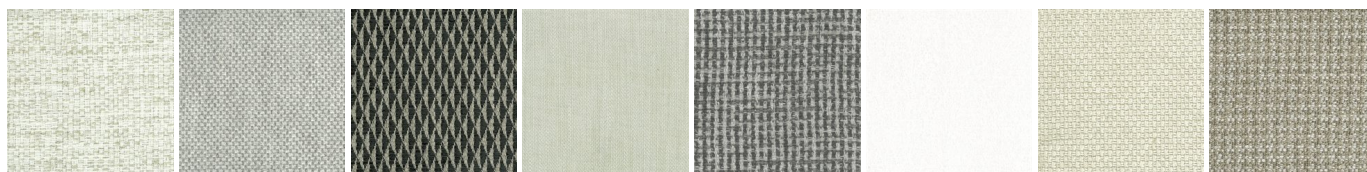
FINISHINGS\ALUMINUM FEET\GLOSSY PAINTEDBROWN NICKEL (1)



GLOSSY
PAINTEDBRO
WN NICKEL

JANE

FINISHINGS\SEAT\FABRIC (35)



CHIOS

ARGO

CORINTO

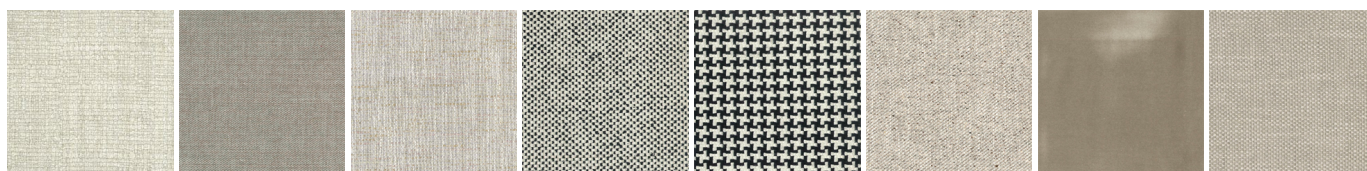
ITACA

MILOS

OLIMPIA

PAROS

ZANTE



SPARTA

SALFORD

ORLEANS

DERBY

LIMOGES

OXFORD

PERSIA

RABAT



MERIDA

HANNOVER

CORDOBA

CALEDONIA

NORWAY

ASPEN

ATLANTA

BERLINO



KYOTO

LIMA

MELBOURNE

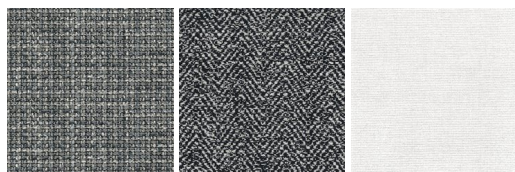
PORTO

REIMS

SAVANA

SIVIGLIA

INDRA - NEW



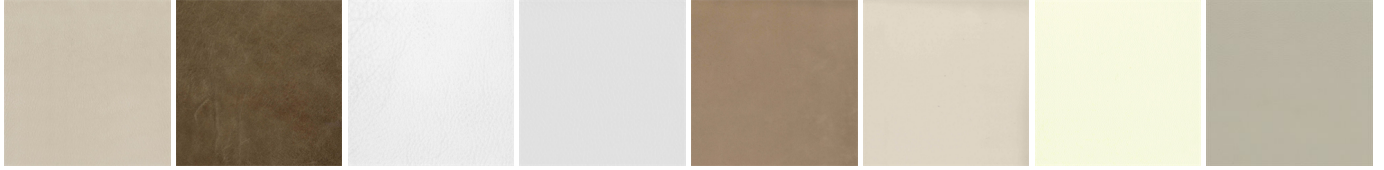
LIPSI - NEW

SKYROS -
NEW

NAXOS - NEW

JANE

FINISHINGS\SEAT\LEATHER (8)



NABUK
LEATHER

VINTAGE
LEATHER

SUPER
LEATHER

PELLE
SPECIAL

AGED-
LOOKING
LEATHER

COLORS
LEATHER

SPRING
LEATHER

SOFT
LEATHER