

# GASTON

VINCENT VAN DUYSSEN (2008)



## DESCRIPTION

Gentlemanly name, elegant features... The Poliform armchair, born of the collaboration with Vincent Van Duysen evokes an exclusive style. Available with covering in leather or fabric to interpret a large range of stylistic definition.

**Poliform**

# GASTON

VINCENT VAN DUYSSEN (2008)



## TECHNICAL DESCRIPTION

### TPOLOGY

armchair

### STRUCTURE

painted metal

### SEAT/BACKREST

moulded polyurethane with elements in multi-density polyurethane foam and feathers

### PRE-COVER

tela cotton e polyester padding

### FINAL COVER

removable in fabric non removable in leather

### LEATHER ARMREST

like cushions in leather-imitation leather models; like structure colour in fabric models

# GASTON

VINCENT VAN DUYSSEN (2008)

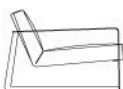
## GAPL780



780  
30 3/4"

410  
16 1/4"

680  
26 3/4"

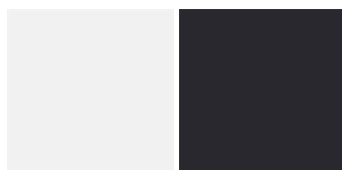


900  
35 1/2"



# GASTON

FINISHINGS\STRUCTURE\PAINTED GLOSSY METAL (2)

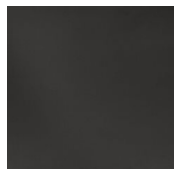


BIANCO

NERO

# GASTON

FINISHINGS\STRUCTURE\ BROWN NICKEL MAT PAINTED (1)



BROWN  
NICKEL MAT  
PAINTED

# GASTON

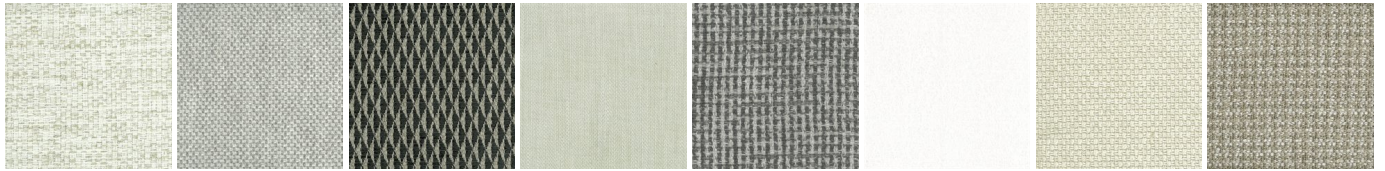
FINISHINGS\STRUCTURE\GLOSSY PAINTEDBROWN NICKEL (1)



GLOSSY  
PAINTEDBRO  
WN NICKEL

# GASTON

FINISHINGS\SEAT\FABRIC (35)



CHIOS

ARGO

CORINTO

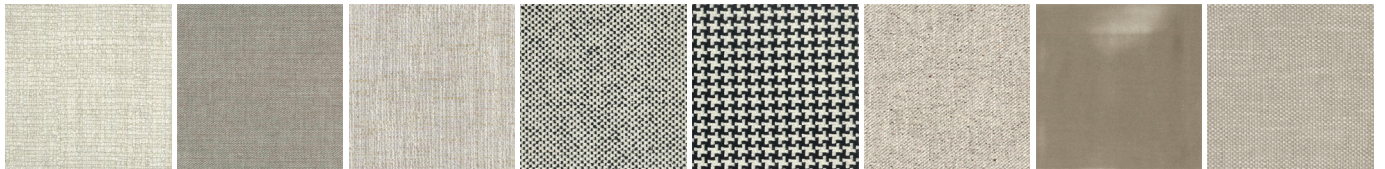
ITACA

MILOS

OLIMPIA

PAROS

ZANTE



SPARTA

SALFORD

ORLEANS

DERBY

LIMOGES

OXFORD

PERSIA

RABAT



MERIDA

HANNOVER

CORDOBA

CALEDONIA

NORWAY

ASPEN

ATLANTA

BERLINO



KYOTO

LIMA

MELBOURNE

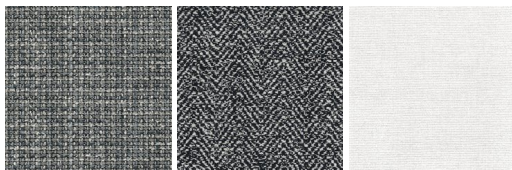
PORTO

REIMS

SAVANA

SIVIGLIA

INDRA - NEW



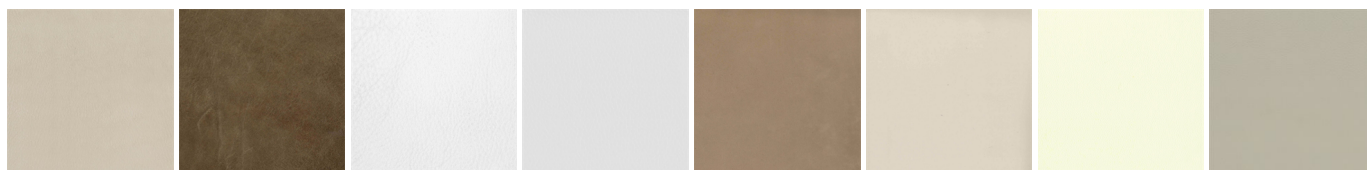
LIPSI - NEW

SKYROS -  
NEW

NAXOS - NEW

# GASTON

FINISHINGS\SEAT\LEATHER (8)



NABUK  
LEATHER

VINTAGE  
LEATHER

SUPER  
LEATHER

PELLE  
SPECIAL

AGED-  
LOOKING  
LEATHER

COLORS  
LEATHER

SPRING  
LEATHER

SOFT  
LEATHER